

# ALBANY INSTITUTE OF HISTORY & ART

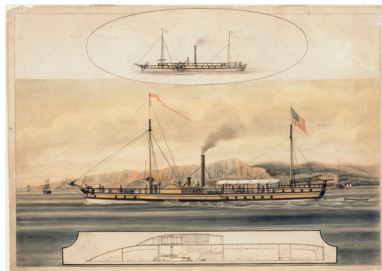
PRESS RELEASE

FOR IMMEDIATE RELEASE

January 30, 2025

Contact: Marisa Espe  
Director of Communications  
[espem@albanyinstitute.org](mailto:espem@albanyinstitute.org)  
518-463-4478 x408

## PORTRAIT PAIRINGS An Exhibition of Portraits Showcasing the Albany Institute of History & Art's Collection



ALBANY, NY—The Albany Institute of History & Art presents *Portrait Pairings*, featuring dozens of works drawn exclusively from the museum's collection. Albany Institute's holdings comprise hundreds of portraits portraying individuals who lived during the eighteenth, nineteenth, twentieth and twenty-first centuries. Some of the subjects are famous, some were famous in their time, and many are unknown.

*Portrait Pairings* includes portraits of people who had personal connections to the Upper Hudson Valley. Some of these pairings are portraits of individuals who were related, knew each other, or shared something in common. Others are displayed with objects they created, were associated with their careers, or represented their passionate interests. Some of the associations are easily recognizable and others less so. We invite you to take a closer look.

*Portrait Pairings* illustrates the great variety in portraiture: monumental paintings and miniature portrait cameos worn as pendants or brooches; formal and informal; subjects young and old; an artist's self-portrait and commissioned works. There are examples by Ezra Ames, Albany's premier Federal-era portrait painter, and Betty Warren, a commercially successful portraitist of the twentieth century.

Juxtaposed with the portraits are related objects drawn exclusively from the permanent collection, showcasing the depth and diversity of the museum's holdings. What object connects to a nineteenth-century cast iron stove depicting George Washington, or Gilbert Stuart's 1795 portrait of Stephen Van Rensselaer III? What painting relates to a grey blue visiting dress by couturier Charles Frederick Worth? The exhibition illustrates how the museum's collection can use paintings and objects from the 1700s to the present to tell fresh and interesting New York stories.

*Portrait Pairings* is complemented by *Americans Who Tell the Truth*, showcasing a selection of portraits by Robert Shetterly (b. 1946), featuring individuals throughout U.S. history who exemplify courageous citizenship and democratic ideals. The exhibition comprises 42 portraits, many with connections to the region. Both exhibitions are on view February 1 through July 20, 2025.

For more information about the exhibition and programming, please visit [www.albanyinstitute.org](http://www.albanyinstitute.org).

# ALBANY INSTITUTE OF HISTORY & ART

## PRESS IMAGES

### *Portrait Pairings*

February 1–July 20, 2025

The following images may be used by the media solely for purposes of publicity related to the exhibition at the Albany Institute of History & Art. Images may not be altered and must be accompanied by the captions noted below. Access image files via Dropbox [here](#).

Please contact Marisa Espe, Director of Communications, at [espem@albanyinstitute.org](mailto:espem@albanyinstitute.org) or 518-463-4478 x408 for all media-related inquiries.



#### **Robert R. Livingston (1746–1813)**

Ezra Ames (1768–1836), c. 1815

Watercolor on ivory

Albany Institute of History & Art, gift of  
Elizabeth S. Edwards, 1951.67.2



#### **Clermont: Three Part Study of a Ship**

Richard Varick DeWitt (1800–1868), 1858

Watercolor on paper

Albany Institute of History & Art, bequest of  
Sarah Walsh DeWitt, 1924.1.2



#### **Mary Augusta Green De Camp Corning Banks (1843–1935)**

Seymour Joseph Guy (1824–1910), 1889

Oil on canvas

Albany Institute of History & Art, gift of the  
estate of Maurice Moore, in memory of his  
wife, Mary De Camp Banks Moore, 1972.81.3



#### **Grey Blue Visiting Dress**

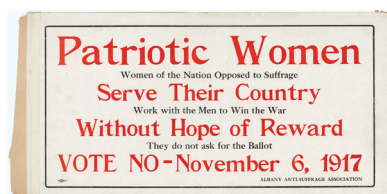
House of Worth (Charles Frederick Worth  
1825–1895), c. 1873

Silk faille and silk taffeta trimmed with steel  
beads

Albany Institute of History & Art, gift of  
the estate of Maurice Moore, in memory of  
his wife, Mary De Camp Banks Moore,  
1972.95.8A-B



**Robert R. Livingston (1746–1813)**  
Ezra Ames (1768–1836), c. 1815  
Watercolor on ivory  
Albany Institute of History & Art, gift of  
Elizabeth S. Edwards, 1951.67.2



**Trolley Car Advertisement Card**  
Unknown printer, 1917  
Ink on cardboard  
Albany Institute of History & Art, gift of  
Cuyler Reynolds, HW 81-20